

# ALAWA PRIMARY SCHOOL NEWSLETTER



TERM 2 WEEK 3  
1ST MAY  
2024

## Dates to Remember

- **Friday 10th May**  
Mothers Day Movie Night
- **Friday 17th May**  
AFL and Tennis Gala Days



## ANZAC Assembly

Super well done to our Defence students and also our School Captains who led us in a respectful, thoughtful ANZAC Assembly last Wednesday. Thanks to Ms Laura and Mrs Barnett for their leadership of this event.

## Principal's Message

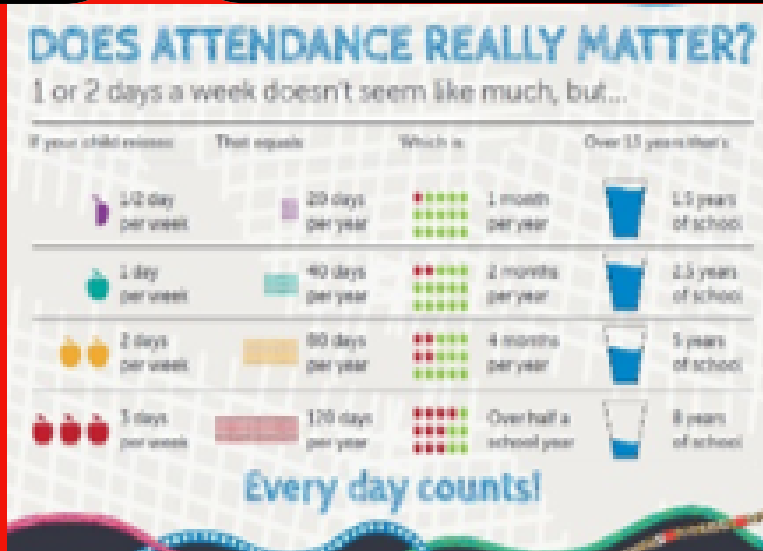
Welcome to our Week 3 Newsletter,

I enjoyed the informative assembly last Friday from 4/5 Daniels and I was very impressed with their understanding of personal 'strengths' and how we use these to be the best we can be.

I have thoroughly enjoyed visiting all the primary classes to deliver my Pep Talks for Term 2 [Rachel Barnett visits Early Years classes]. During my talks we reflect upon the previous term, whilst identifying the initiatives and plans for the term ahead. Data plays a big role as I share attendance, late and behaviour statistics. We look for trends and discuss ways to improve. The children are always amazed when I show them the infographic posted just below.

Statistically if a child misses one day of school each week, it equates to missing 2.5 years of schooling over the course of their school life.

Here at Alawa we take things like late, attendance and behaviour into account when we select students for Gala days and camps. This is a great reminder to encourage regular attendance.



# Principal's Message contd.

**THUNKS**  
Puzzlements, riddles & philosophical questions to wake your brain up!

# THUNK!



## THUNKS

Unusual questions to make you think!

There are **NO** right or wrong answers to these questions – simply **YOUR** answers.

You do, however, need to think about your answers and be able to justify them – in other words, don't say the first thing that comes into your head, **AND**, be prepared to fully explain your answers when you give them.

Listen to the answers given by others and treat them seriously – even if they sound odd, they may all be valid if they can be justified.

Thanks! Get thinking and discussing!

Can you ever learn too much?

### Think of the Week:

Staying the same as last week due to the shorter week with ANZAC Day.

So far we have heard some interesting responses from Tama, Reuben and Findlay in 5/6 Horigan. What do you think?

**Sandy Cartwright** [Principal of the Best School in the Multiverse]

If elephants ruled the world, what changes would you see?



Congrats to our Award students last week and our Honour Distinction student!



## Assistant Principal's Message



### KIDS FITNESS BOOT CAMP

AS part of our wellbeing as well as preparation for our school Sports Day on June 7th, today we recommence fitness bootcamp on a Wednesday morning.

We ask for all children to arrive at school by 8:15am Wednesdays and we all gather on the oval for 30minutes. Parents and family members are also invited and encouraged to come and join us.



Hi Alawa Families!

Welcome to week 3! Early Years PEP talks are complete and I was impressed by the students' understanding of the Alawa way, including the ALLE Tools - Communication, Persistence, Problem Solving, Reflect and Collaboration. I will be carrying on the focus on Collaboration with some of the classes in my Health / SEL lessons later this week. Can't wait!

In preschool, I have enjoyed seeing the children role play. With a car wash, traffic lights and signs and petrol stations set up, the preschool children are ready to go and having a lot of fun!

The SRC is running their annual Mother's Day Stall in week 4. On Wednesday 8th, Thursday 9th and Friday 10th of May, before and after school (until sold out), the SRC students will have their stall open for business, with all sorts of goodies for the amazing Alawa mums available. As well as being an opportunity to spoil mums, this is an SRC fundraiser, with all proceeds going towards fixing up the flying fox in the Primary Years playground.

Speaking of Mothers' Day... don't forget our Mother's Day Movie Night to be held on 10th May. Doors open at 6pm and the movie, Migration, starts at 7pm. Food and drink will be on sale as well. This is a School Council fundraiser with proceeds going towards our decodable readers. Come, join in and have a relaxing night at the movies!

Rachel Barnett [Assistant Principal]



**PROBLEM  
SOLVE**



**COLLABORATE**



**COMMUNICATE**



**PERSIST**



**REFLECT**

**I LIKE KNOWING  
WHAT HAPPENS NEXT**

# CALENDAR OF EVENTS

Monday 6th May	May Day - Public Holiday	
Tuesday 7th May	Maths Enrichment at DMS	9:00am - 1:00pm
Friday 10th May	Assembly hosted by 5/6 Baines	8:40am
Friday 10th May	Mother's Day Movie Night	5:30pm - 8:30pm
Wednesday 15th May	Bootcamp	8:15am-8:45am
Wednesday 15th May	Preschool Picnic Night	5:00pm- 6:00pm
Friday 17th May	Red Ball Tennis Gala Day AFL Gala Day	All day
Monday 20th May	School Council Meeting	5:30pm - 7:00pm

**SAVE  
THE DATE**

**DON'T**

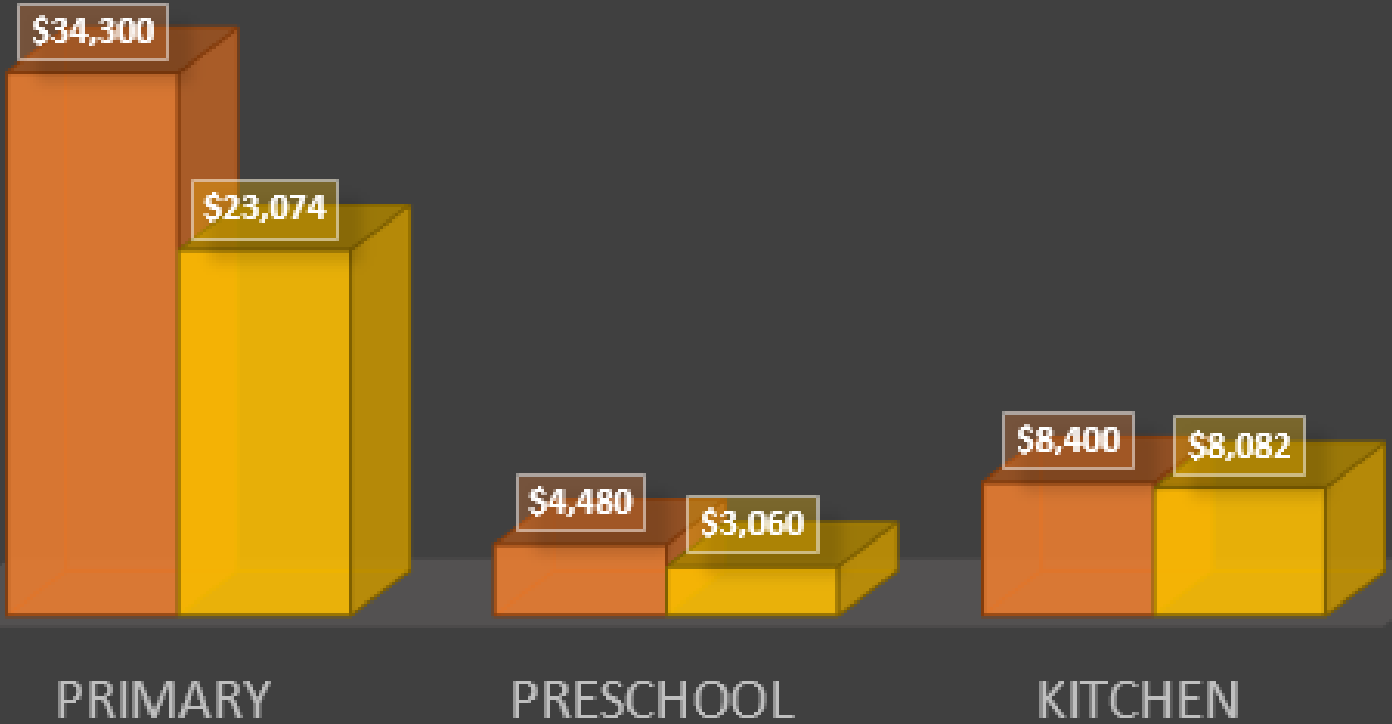
**MISS OUT!**



# ALAWA PRIMARY SCHOOL

## 2024 SCHOOL CONTRIBUTIONS

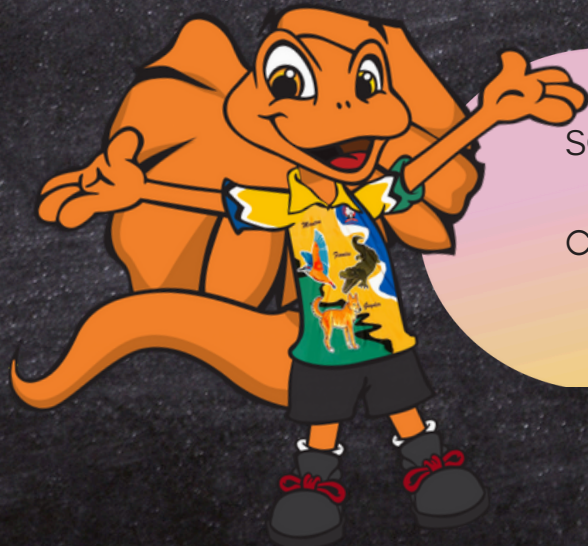
TARGET YTD



PRIMARY

PRESCHOOL

KITCHEN



PARENT CONTRIBUTIONS HELP ALAWA PRIMARY SCHOOL TO BE THE BEST SCHOOL IN THE MULTIVERSE, BY PROVIDING A WIDE RANGE OF EQUIPMENT AND CONSUMABLES, INCLUDING LIBRARY BOOKS, LITERACY AND NUMERACY RESOURCES, ICT EQUIPMENT AND ART AND CRAFT SUPPLIES.

# CLASS NEWS

## 3/4 GARDNER



Welcome back to Term 2!

Year 3/4 Gardner have been working hard this term to improve in all subjects. It has been amazing to see students giving their personal best at everything they do. Students have been collaborating and communicating with their peers to complete lots of challenging learning activities. We can't wait to continue to grow in our learning!

## SPORTS DAY VOLUNTEERS

One of our major events this term at Alawa is Sports Day, Friday 7th June, which is fast approaching. Therefore, we are doing our annual call out for parent volunteers.

As you know a lot of planning and time goes into our Sport's Day and it could not run as smoothly as it does without our parent volunteers. If you have some spare time on the day and would like to help on an event, in the canteen or delivering fruit platters to our hard-working athletes, please contact the front office via phone or email. If not pop in and there will be a sign up sheet at the front office.

[alawa.school@education.nt.gov.au](mailto:alawa.school@education.nt.gov.au)  
8997 7666



# HELP NEEDED

Alawa Team

# PLAYGROUP NEWS



What a fun first day back at playgroup last week! We had a few new people there too! It was lovely getting to know them and have them join in on our playgroup adventures and speaking of adventures, the farm is a great place to be for exciting and ever-changing things happening! So that's exactly where we went. Pointing our new friends in the right direction we followed the path, past the kids on the oval and Mrs McGrath in her Bright, Happy dress, past the playground and chickens with feathery feet, into the farm gates.



It was so very exciting not knowing where to go first. The chicken pen seemed like a good place to start so we all headed in to meet the Friendly Feathery Flock who were quite happy coming right up to us, probably hoping for tasty scraps, but they just got gentle pats. Next we visited the animals in the shed. We went all around saying 'hello' to the bunny, Hey Hey the dragon and his turtle friends, and the fishies at the hydroponics. We saw a little quail egg wiggle in the incubator, we wondered how long until it would hatch? And talking about animals hatching, ( or being born ) we thought we would check in on the cute furry guinea pigs and an apparently pregnant mumma but when Farmer John opened the hutch door, there was not a big round mumma but instead some baby guinea pigs!!! Well we did say the farm is the place for adventures and we certainly had a wonderful time on our visit, we can't wait to go back again!



At our next playgroup we will do some baking so bring your mixing muscles.

Miss Erin [Playgroup Coordinator]

# LIBRARY NEWS

Last chance for Book Club Issue 3: orders due by next Tuesday the 7th of May. If you have missed getting a copy of the catalogue you can pick up a copy from the office or head online and view and order from the catalogue on the Scholastic Bookclub website at [scholastic.com.au/LOOP](http://scholastic.com.au/LOOP), download the LOOP app From [Google Play](https://play.google.com/store/apps/details?id=com.scholastic LOOP) or from the [App Store](https://apps.apple.com/au/app/scholastic-loop/id1441111111) or return your order form and payment to the office. Spare catalogues will be available at the office if you miss out.

Books to check out in Issue 3 include:

L.O.L G.O.A.T Laughs Out Loud by Kate and Jol Temple [These Authors visited the school last year and have also written the Bin Chicken Books] \$10

Bowerbird Blues by Aura Parker [2024 National Simultaneous Storytime Book and one of CBCAs Shortlisted Picture Books of the Year] \$12

Hello Twigs - Puddle Party by Andrew McDonald and Ben Wood [Authors of the Real Pigeon Series. This book is for ages 3-7] \$9

I Survived - The Battle of D-Day, 1944 and Hurricane Katrina, 2005 By Lauren Tarshis [This series is a student favourite. These two books are in Graphic Novel format] \$13 and \$9

Finding My Voice by Aoife Dooley [Always be Proud of Who You Are. A graphic novel like no other, told with humour, heart and a unique perspective on autism.] \$16.00

Ms Sacha Evans [Library/ICT]



# Alawa Preschool Family Picnic

Wednesday 15th May 2024  
5:00-6:00pm

Come and join us in the preschool yard for a get-together to celebrate all the diversity of cultures and families in preschool **Red** and **Blue**.

***Please bring your own picnic rug and a dish to share of your family's favourite meal.***

This is a great opportunity to get to know other preschool families and preschool staff.

The preschool children will also be singing a short cultural song we have been learning at school.

**Icey poles (\$1)** will be on **sale** to fundraise for our preschool to build a water pump and dry creek bed.

We will have paper plates and cutlery available, however we are encouraging families to bring their own reusable plates/cutlery to save waste. We will have washing stations set up to be used to rinse your plates before you go home.



**See you all there!**



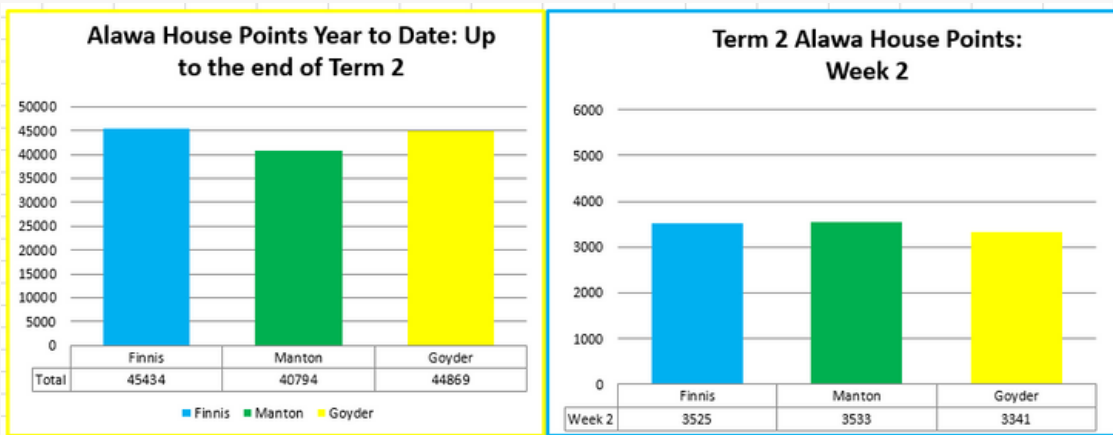
# HOUSE POINTS



Students at Alawa receive raffle tickets [house points] for their attitude and behaviour in the playground and out the front of the school at the end of the day. Points are then counted on a Friday along with the points for students in full uniform, wearing house shirts etc.

At the end of each term, we also include the point's earned through the recycling project and water bottle checks. Parents can also earn points for their houses by volunteering at the school- Whether it's in the kitchen, the farm, the library, the canteen or even in the classroom, parents can earn 100 points each time they volunteer. Make contact with your classroom teacher or the front office to find out more information.

**In Week 2 of Term 2 Manton was ahead with 3533 points!  
In the lead for the Year to date is Finnis with 45434 points!**



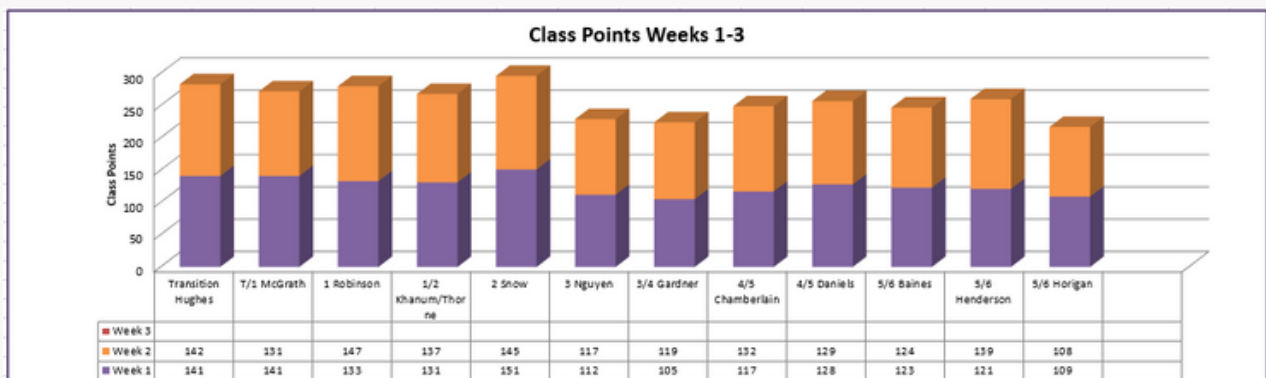
# CLASS POINTS



Muster is held at Alawa after each recess and lunch break - this gives us an opportunity for everyone to settle from playtime, share any celebrations and work on consistency of messages and expectations.

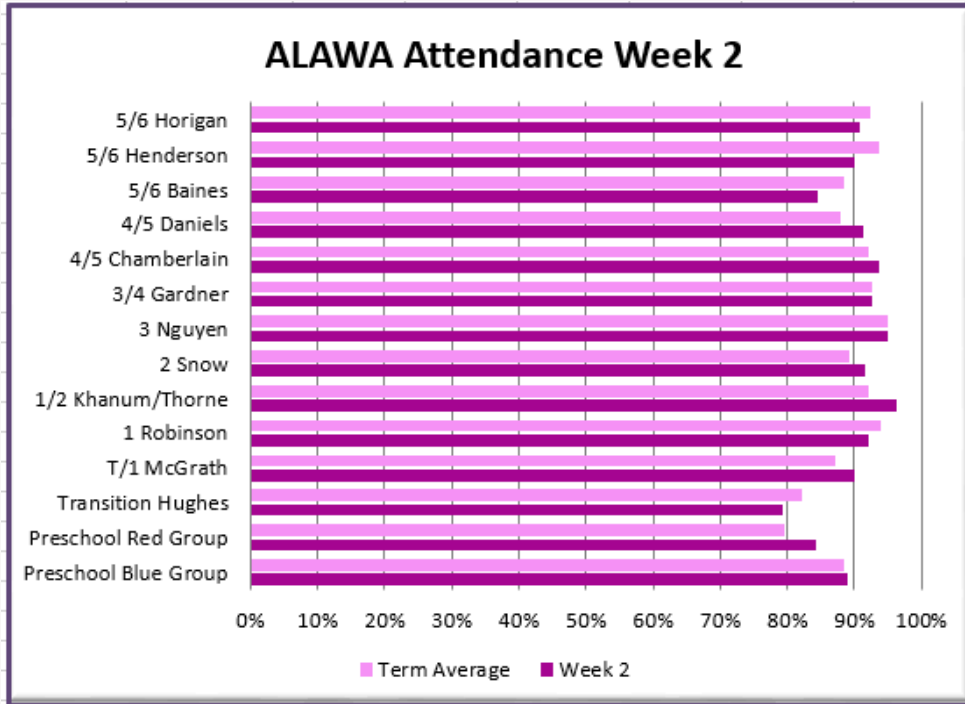
Each week we allocate class points during Muster time recognising those students who were ready and waiting to go back to class calmly and quietly after break times. The winning class from each 3 weeks will receive ice-blocks from our Principal and get to choose 3 songs that will play before our bells for the following 3 weeks.

**The class with the most points in Week 2 of Term 2 was...1 Robinson with 147 points!!!**



# ATTENDANCE

Primary School Average for Week 2 Term 2: 90.64%  
 The class with the highest attendance for Week 2:  
**1/2 Khanum-Thorne with 96.20!!! Amazing job!!!**

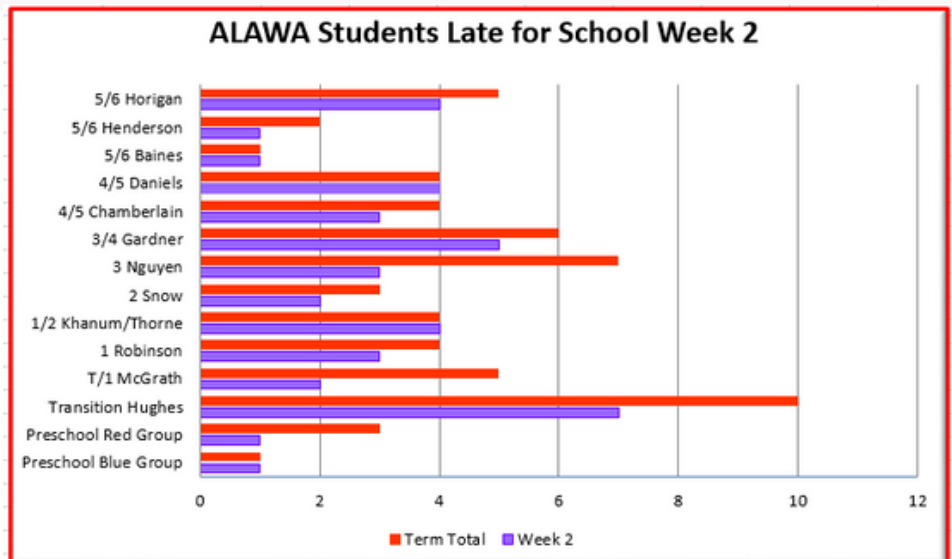
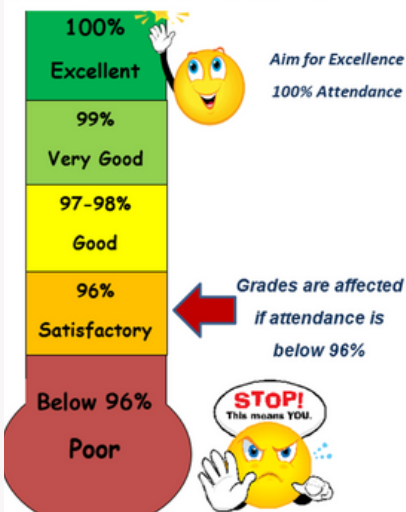


# LATES

Arriving late for school has a significant impact on your child's learning and engagement in the education program.

There were 41 lates in Week 2!

## ATTENDANCE

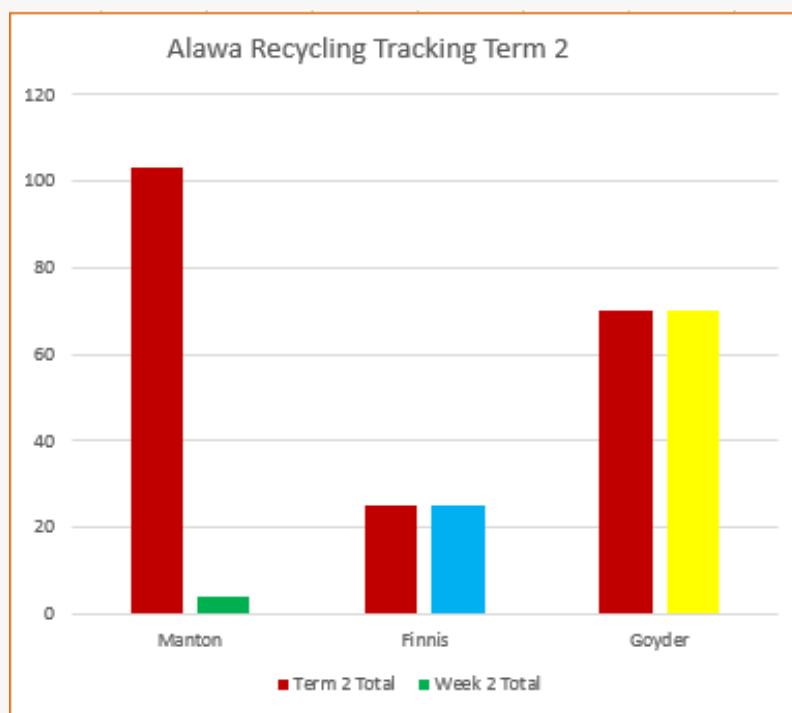


# RECYCLING



Our recycling bags are up and ready for deposits in their usual location in the back car park hanging on the fence.

Each bag represents a house and all items will be recorded as a point for your house. Items can be delivered during school hours and placed directly into the bags.



## SPORTING SCHOOLS NEWS

Some exciting Sporting School news:

Afterschool AFL notes were handed out on Monday for interested students in grades 3 - 6.

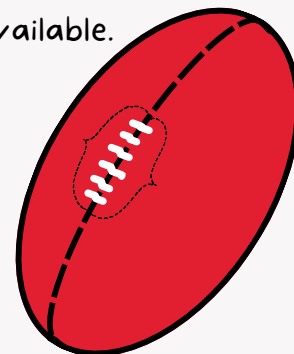
Details are: Thursdays 3pm - 4 pm with AFL NT coach.

Dates: May 2 - May 23.

Please return notes ASAP to front office. There are 30 places available.

Lunchtime Tee Ball for early years! [T - 2]

Starting this week, Thursdays for weeks 3, 4, 6 & 7 of this term.



Ms Gina [Sporting Schools Coordinator]

CAFE NEWS



# Mother's Day MOVIE NIGHT

A VERY SPECIAL OUTDOOR SCREENING OF

HOT & COLD FOOD  
AVAILABLE!



BRING A BLANKET  
OR CHAIR!



10TH MAY 2024  
**DOORS OPEN AT 6 PM**  
**MOVIE STARTS AT 7 PM**

Alawa Primary School 27 Pett St, Alawa NT 0810

**All children must be supervised by an adult**

DON'T MISS OUT AND PREORDER VIA

[alawa.school@education.nt.gov.au](mailto:alawa.school@education.nt.gov.au)

OR BUY YOUR TICKET AT THE GATE

**TICKETS**



# FFC FOR GRADUATION



At the start of the year we decided to raise money for Graduation so we immediately took action.

Introducing Reuben Smith and Jackson Pearson, founders and managers of the new empire, FFC© or Frozen Fruit Company!

During Term 1 we have been supplying frozen fruit to the kids of Alawa but now times have changed. Our apple sources have dried up so we need your help. We ask if you can give your child an apple to bring to school and put it in Mr Horigan's class fridge.

Your support is greatly appreciated!



## DSM NEWS

It has been lovely reconnecting with you all these last couple of weeks as we have hit the ground running for Term 2. Thank you so much to all the parents and families who attended the Anzac Assembly last week. And a special thank you to Captain Glenn Tannock who presented as a guest speaker. Your support is greatly appreciated. I received lots of positive feedback from teachers and parents.

I would also like to extend a thank you to Rachel Barnett, for all her time and support in helping plan and execute the Anzac Day commemorations. Rachel's efforts to communicate with staff and practice with the senior Defence students and school and vice captains on the days that I was not at Alawa ensured that the assembly ran smoothly. The time she spent practicing with the students ensured that they were comfortable to stand up in front of the school. I am very proud of the way our students spoke and conducted themselves.

On Wednesday of week 5 I will be attending the quarterly DMFS workshop, where DSMs from across Darwin and Palmerston meet for discussion and training sessions. I will not be at Alawa on this day, and there will be no Defence Kids Club running as a result.

As always, please do not hesitate to contact me if you have any questions or concerns.



**Miss Laura [Defence School Mentor]**

# SCHOOL COUNCIL NEWS

Dear school community, this is an update on the School Council discussion about keeping the café running.

We are unable to keep the café running at this time. The last day that the Alawa Café will be providing food is Friday 17th May. The café will be closed from Monday 20th May.

We are seeking to reopen the café, or a similar service, if a suitable private tender can be identified. Please contact the school ([alawa.school@education.nt.gov.au](mailto:alawa.school@education.nt.gov.au), 08 8997 7666) if you or someone you know is interested in leasing a kitchen space and/or providing a school café service.

Please read on to understand why this decision was made.

Thank you to those people who responded to the café survey. We received 93 responses (25 students, 7 staff, 61 parents). We estimate that this is about 25% of the school community. The majority of the people who responded to the survey said they enjoyed the food and they valued the service.

The School Council recognises that the Alawa Café provides a valued and appreciated service to the school community. It is part of what makes Alawa School a welcoming place. We particularly thank Ms Yenni for her delicious food and enthusiastic efforts.

However, this survey response and the current purchases from the café do not indicate the school community's desire to use the service frequently enough to make it financially viable.

The Council has a Café sub group that is specifically responsible for reviewing the café function and looking for opportunities to improve the viability of the café. In the past 2 years the School Council has:

- allocated parent contributions to the support the café
- promoted the café at muster, and to staff and students at Namarluk Primary School
- promoted the café in the school newsletter, asking the community to support it so that it can stay open
- ordered food from the café for school events
- raised the prices of café menu
- reduced the opening hours to only the busiest days of the week.

None the less the Alawa Café ran at a loss in 2023, and for several years prior. At their recent meeting (Monday 22nd April ) the School Council regretfully decided that it is not able to continue to support the café.

The School Council is responsible for ensuring that the educational outcomes of the whole school community are supported. Whilst public school funding remains limited the range of services that the school can support to run at a loss is limited and they must be of significant educational benefit if. Prime examples of this are the farm and kitchen programs. Continuing to support the café financially means that we were regularly reducing the money that is available to support the educational resources for the school.

The School Council supports future reopening of the café, or a similar service, if a suitable private tender can be identified. Please contact the school ([alawa.school@education.nt.gov.au](mailto:alawa.school@education.nt.gov.au), 08 8997 7666) if you or someone you know is interested in leasing a kitchen space and/or providing a school café service.

**Alawa Primary School Council**

# CAFE NEWS

**IMPORTANT**



**UPDATE:** The Alawa School Cafe will be closing down. Last day operating will be Friday 17th May. We apologise for any inconvenience.

## **SPECIALS Term 2, Weeks 1-5**

Thursday: Homemade Mini Meat Pies- 1 for \$3.50 or 2 for \$6.50

Friday: Fettuccinni Carbonara \$6.50

A reminder that our school Cafe is open Thursday and Friday  
**ONLY.**

Closed on Mondays, Tuesdays and Wednesdays.

Order online at [www.quickcliq.com.au](http://www.quickcliq.com.au)

**yummm!**



**DID YOU KNOW?**

# COMMUNITY NOTICES



## COMPETITION CLOSES 6TH JUNE

Written entries to be emailed in a word document to [lesley.colling@education.nt.gov.au](mailto:lesley.colling@education.nt.gov.au)

Paint a poem entries to be submitted in hard copy to the Casuarina library.



Prizes will be presented at The Radical Writers Festival Day, 12.30 pm - 1 pm on Tuesday, 6th August at Dripstone Middle School

## THE RADICAL WRITERS FESTIVAL DAY

Date: 6th August 2024

Venue: Dripstone Middle School

9 am - 12 pm

Students Y5-7 from Northern Suburb schools will participate in Writing workshops with local authors and artists.

12.30 pm - 1 pm

Radical Writers Competition Presentations.

## THE RADICAL WRITERS COMPETITION 2024



### PROUDLY SPONSORED BY



**CLOSING DATE:  
6TH JUNE 2024**

## RULES FOR COMPETITION

**THE PURPOSE OF THE RADICAL WRITERS COMPETITION IS TO ENCOURAGE AND PROMOTE YOUNG WRITERS IN THE NORTHERN SUBURB SCHOOLS BY PROVIDING AN OPPORTUNITY TO SHOWCASE THEIR WRITING ACHIEVEMENTS.**

- The Writing Competition is open to students who attend school in the Northern Suburbs.
- All writing submitted is to be the original work of the student.
- Teachers can assist with brainstorming and proofreading only.
- Entrants are eligible to enter more than one piece of writing in all categories.
- Writing entries will be judged by a panel of local authors and educators.
- The Year 2 Paint A Poem entries will be judged by the Casuarina Library.
- SWAN category entries will be judged by a Special Education teaching panel.
- Winning school entries will be notified through their school representative and personal entries will be directly notified.
- Winners will be invited to the awards Presentation in Term 3.
- By submitting an entry, permission is given for written work, name of author and product to be displayed, published or promoted by the Radical Writers Festival and sponsors of the event.

## CATEGORIES



## ENTRIES

### PAINT A POEM Y2

An original poem and painting for display as one piece. The poem can be written or typed and stuck to the picture. Entries to include the student's name and school written on the back of the page. Maximum size of A3. Year 2 only.

### WRITTEN ENTRIES Y3-7

Original short story. Max 600 words. Original poem. Max 200 words. Word document only, font-Ariel, size 12. No illustrations/borders. Entries to include student name, year level and school typed at the top of the first page.

### STUDENTS WITH ADDITIONAL NEEDS Y3-7 AND Y8-12

Original short story. Max 600 words. Original poem. Max 200 words. Word document only, font-Ariel, size 12. No illustrations/borders. Entries to include student name, year level and school typed at the top of the first page.

## PRIZES FOR EACH CATEGORY

FIRST PRIZE \$100  
ENCOURAGEMENT AWARDS \$20

**ENTRIES DUE  
6TH JUNE**